



~ since 1991

Mr.control™

2024

NEW ITEM

HIGH PERFORMANCE
FOR EVERYONE



1991-2024

WE ARE HERE FOR 30 YEARS MORE

- Employees: 100
- Production volume: 7 assembly-lines
- We have 3 factories in Taichung city of Taiwan
- Machines Currently in service:
Swiss lathe, CNC Milling Machine (3 axle, 4 axle, 5 axle), 28 sets CNC lathe,
4 sets Turning & Milling Machine in the factory
- Subcontract factories over 100 sets CNC machine capacity

Your best OEM, ODM total solution partner

Mr.
control



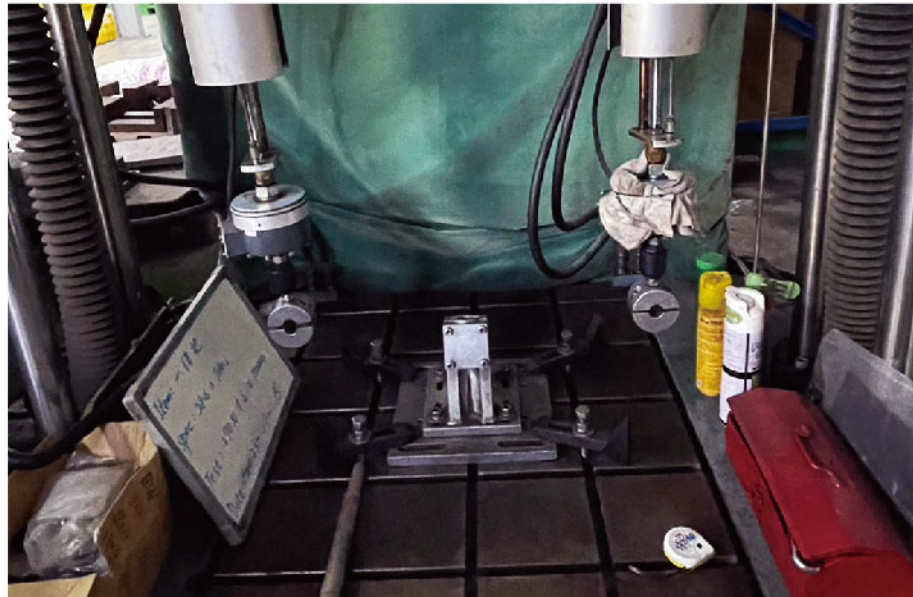
▼ Factory 1 locate at Fengyuan Dist, Taichung city, 1000 m²



Testing lab ▼



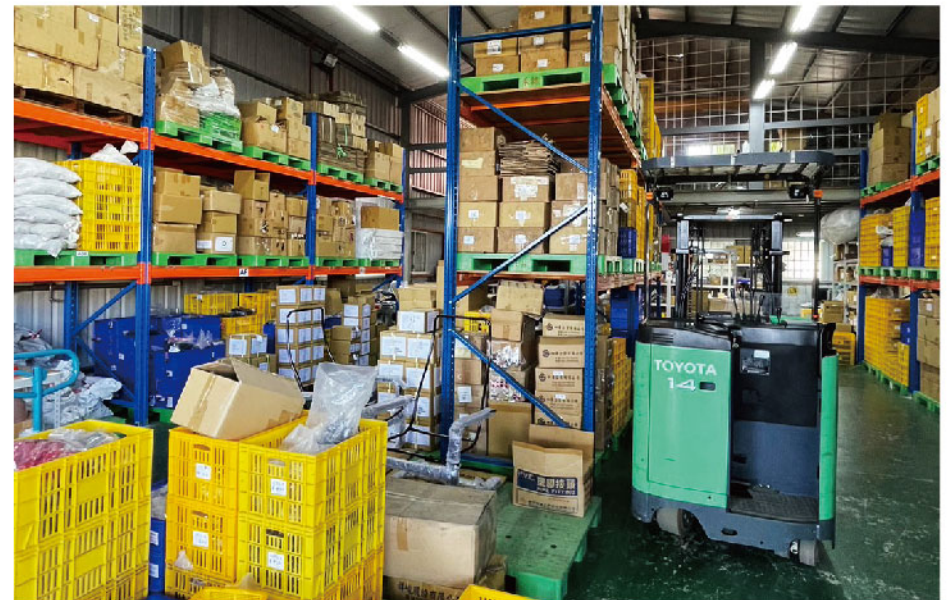
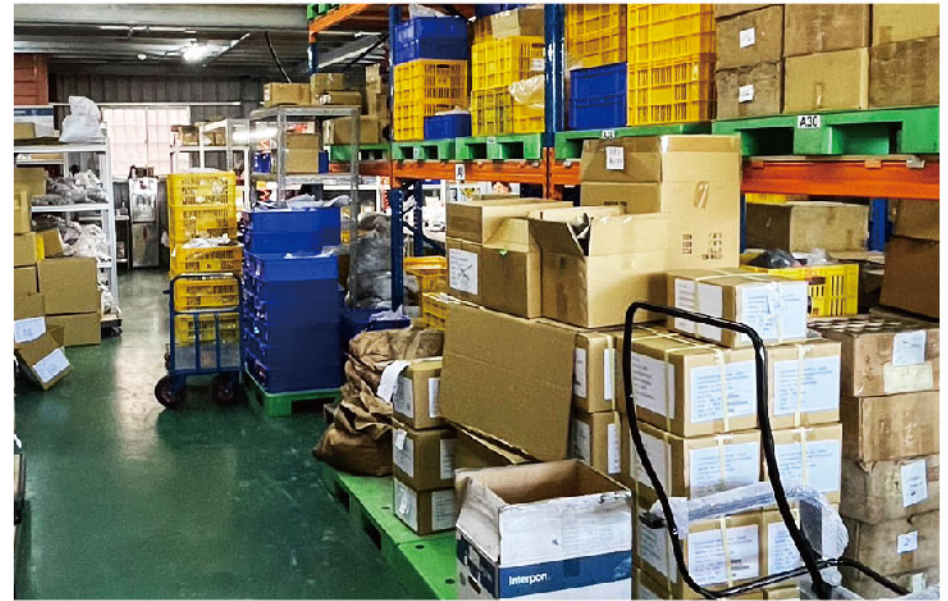
▼ Fatigue testing machine



Warehouse at factory 1 ▼



Our factory 1.5, 450 m² away from factory 1.
We have 25 people, service for 1 customer's product.



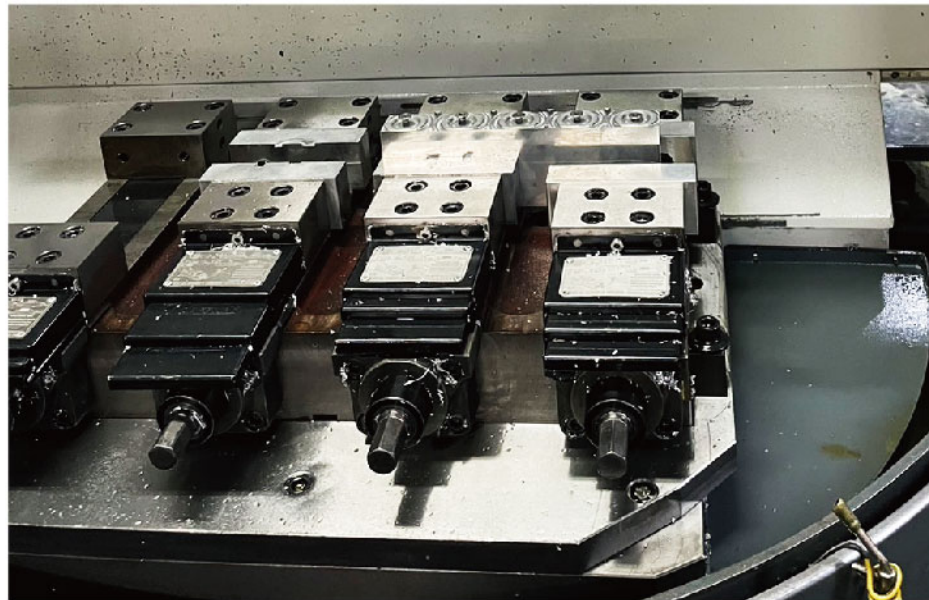
Our factory 3 in Shengang Fengzhou Science and Technology Industrial Park.
We have 2 assembly line on the second floor.



▲ Assembly line

Deburr machine ▲

Change table CNC milling machine, 5 alxe machine, 4 alxe machine, 1.6 M CNC machine.



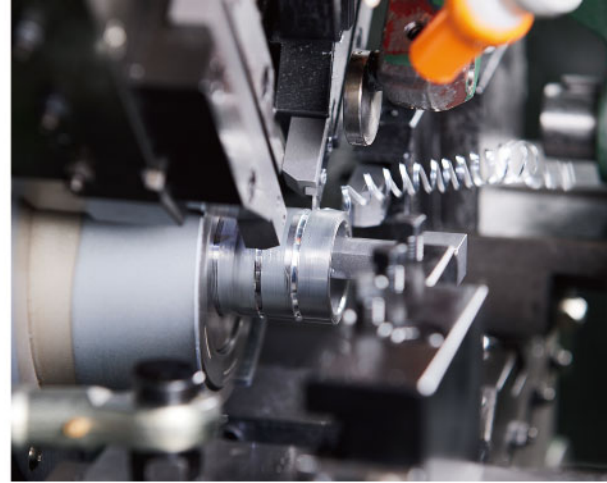
Sewage treatment equipments, It can separate mud and chemical water. The chemical water is reusable. ▲
Sometimes there is too much chemical water, we can use this machine to separate the chemicals from the water.

The farm next to the factory 1,
it is offer to colleague plant vegetable and fruits for free,
and only organic materials can be used.





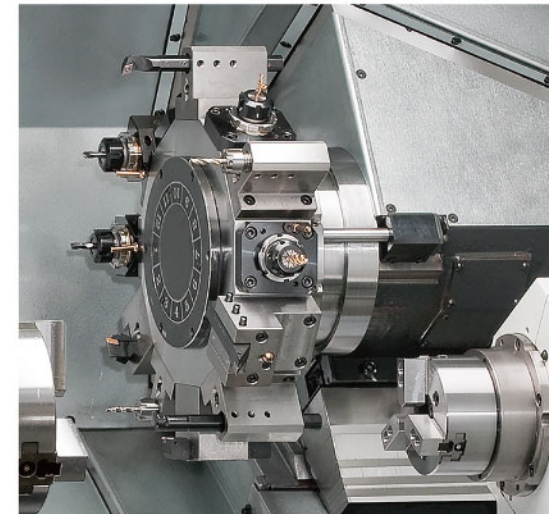
▲ 4-Axis Milling Machine



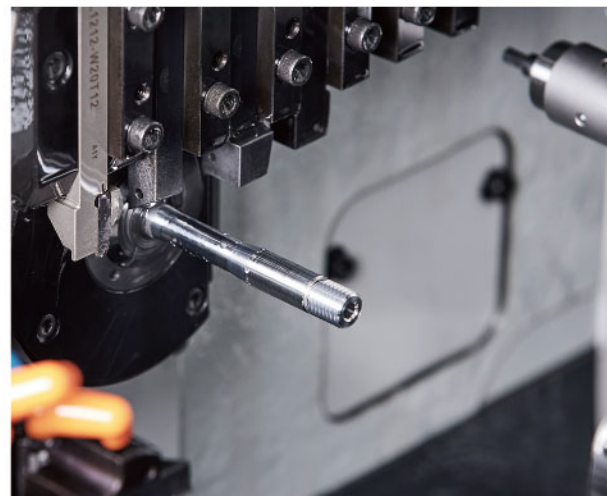
▲ Automatic Cam Lathe



▼ 3+2-Axis Machine



▲ CNC Turning Lathe



▼ Swiss Lathe



NEW
SPAX-UA-1-142(168mm)
SPAX-UA-1-148(176mm)



Thru axle with UDH hanger set.

MATERIAL: Axle/High Strength AL6066-T6
Hanger/ High Strength AL6066-T6/ Nylon12+Glass Fiber



UDH-HANGER



Universal Derailleur Hanger.

MATERIAL: High Strength AL6066-T6/
Nylon12+Glass Fiber

COLOR: Black

WEIGHT: 27g



Main body Alloy co-molded with
Nylon destructive test.
"Passed the torque test of 40N.m"



SPAX-12X-M0-C2



MATERIAL: AL6066-T6 axle
SPEC: Refer to the specification table.
OPTION: Thread M12 x 1.0 // M14 x 1.5 / M15 x 1.5
Custom length thread design available

12mm axle with CNC cut to save weight and spiry helicoid cut to prevent axle stuck with dust and mud and prevent the axle stuck in the hub.

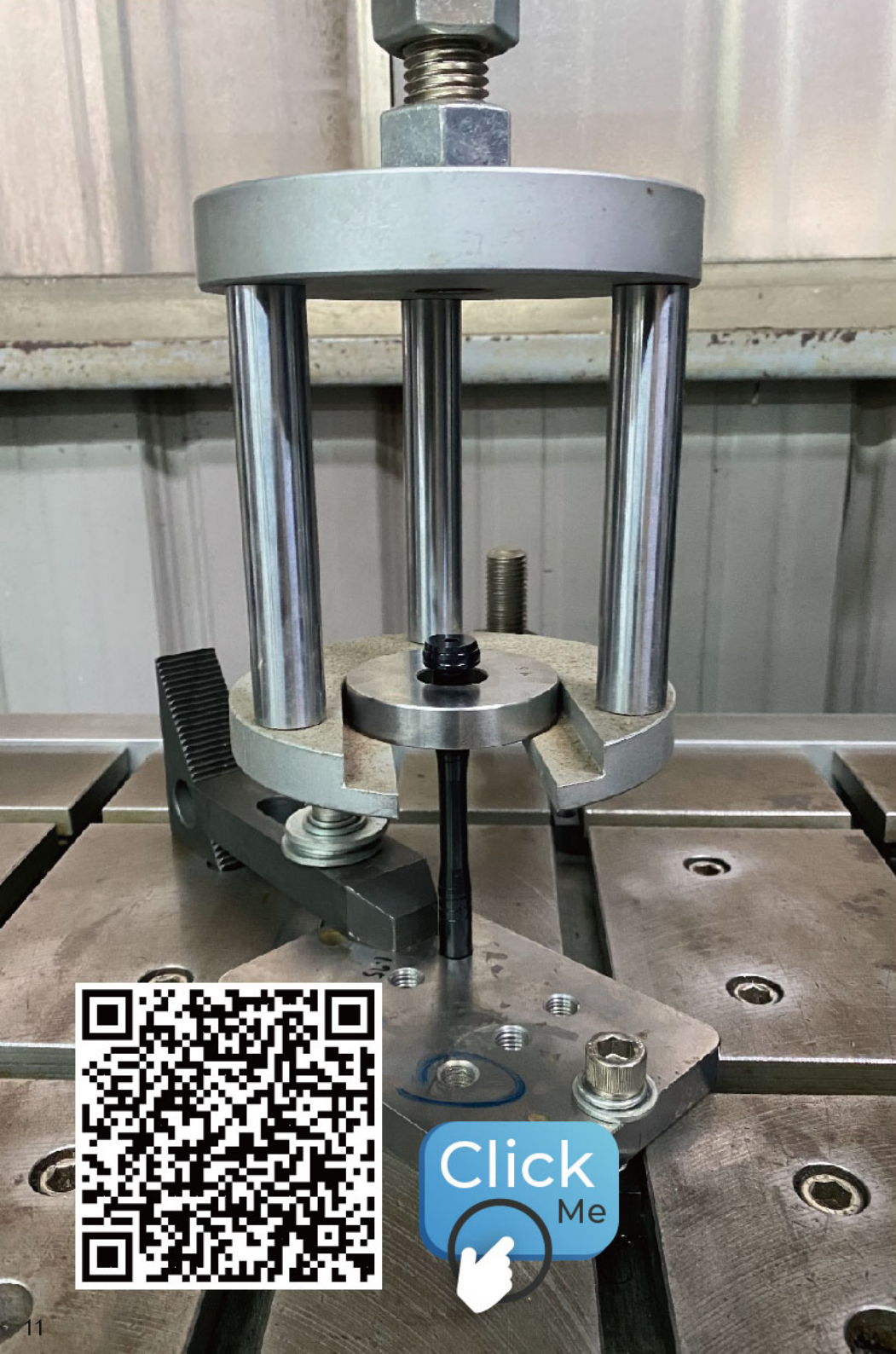


Only for SPAX-12X-M0-C2



Riveting workieces





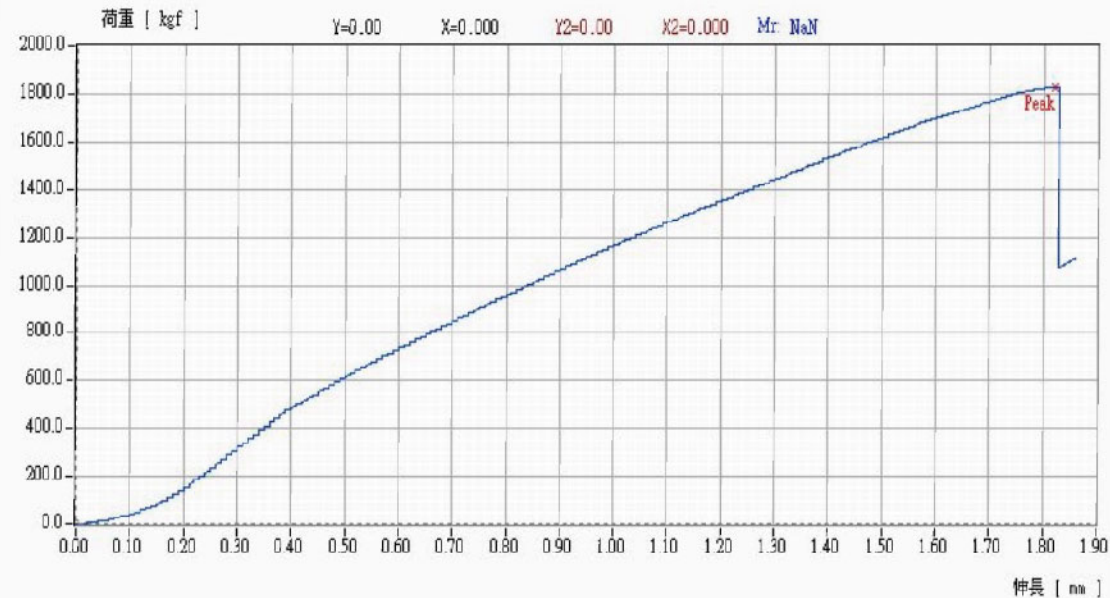
禾詰企業有限公司
LAMINAR ENT. CO.,LTD.

台中市豐原區豐南街92巷167-3號
TEL:886-4-25391989 FAX:886-4-25391973
Email:paimaero@ms35.hinet.net

材料測試_試驗報告

- | | |
|----------------------------|------------------------------------|
| 1.公司名稱：禾詰企業有限公司 | 8.試件名稱：sample |
| 2.操作者：Sam | 9.標點距離：50.000mm |
| 3.試驗批號：SPAX 12X MO -Samlp1 | 10.試件斷面：不規則 |
| 4.試驗日期：2021年3月12日 | 11.試件斷面：不規則 |
| 5.試驗溫度：25C | 12.試件面積：400.0000mm ² |
| 6.試驗型態：拉力試驗 | 13.總能量：18J |
| 7.試驗標準：心軸拉力破壞 | 14.弦形係數：148.852kgf/mm ² |
| | 15.備註： |

	荷重(kgf)	伸長(mm)	應力(kgf/mm ²)	應變(%)
最大	1828.9	1.82	4.572	3.64
斷裂	1111.7	1.86	2.779	3.72
降伏	0.0	0.00	0.000	0.00



Click
Me



QR-TAK-12X/15X-C2



Step-in System Lever removable.
With 4mm allen key for stem bolt / clamp bolt.

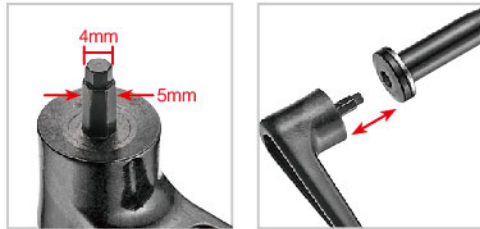
MATERIAL OF LEVER: Carbon Injection

MATERIAL OF AXLE: AL6066-T6

SPEC: Refer to the specification table.

OPTION: Thread M12 x 1.0 // M14 x 1.5 / M15 x 1.5

Custom length thread design available



P.A.T. ED



QR-MF18-12X (C2)

Light weight design lever / lever can be adjusted from rotational position.

MATERIAL OF LEVER: Carbon Injection

MATERIAL OF AXLE: AL6066-T6

SPEC: Refer to the specification table.

OPTION: Thread M12 x 1.0 / M12 x 1.75 with nut C2 Axle

Custom length thread design available

12mm axle for front fork available



SPAX-TL-12X



Integrated 6mm allen key system with 12mm / 15mm hollow axle,
with cover to keep tool in position.

MATERIAL: AL6066-T6 axle

SPEC: Refer to the specification table.

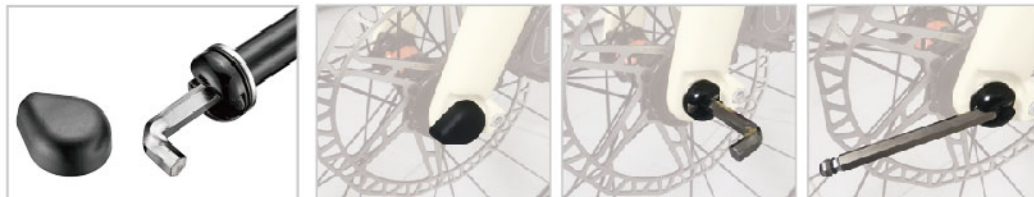
OPTION: Thread M12 x 1.0 // M14 x 1.5 / M15 x 1.5

Custom length thread design available

12mm / 15mm axle custom design available



P.A.T. ED



SPAX-12X-R2R

Protects the dropout from side impacts,
Strengthens interface between derailleur
and frame, with Custom length thru axle.

MATERIAL: AL6061-T6

COLOR: Sand blast black

SPEC: Custom length thread design available

Axle length 160.8mm bitch M12*1.5

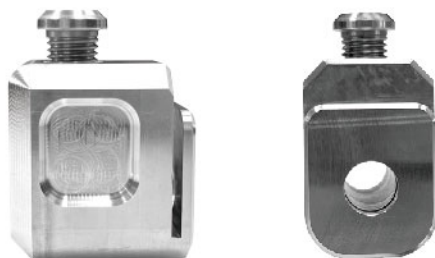
fit 2023 Giant TCR & PROPEL & DEFY.



NEW
AXLE-CUT-V

Tool for Axle length cutting.

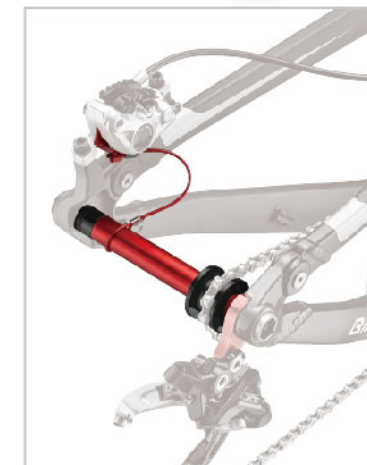
MATERIAL: Crmo-steel
SPEC: 12mm axle only



QR-SM-TAR

For rear \varnothing 12mm thru axle.
Include width adjuster: 142, 148, 150mm.

MATERIAL: AL6061-T6
WEIGHT: 91g/set (with adapter)



QR-SM-PLR-142E/ 148E / 150E



Handy chain tension device for travelling.
For rear \varnothing 12mm thru axle frame.

MATERIAL: Plastic
SPEC: Width 142 / 148 / 150mm
WEIGHT: 46g/pcs (142E)



QR-SM-TAF012 / TAF015/ TAF0151 / TAF020

For fork \varnothing 12 x 100 thru axle
 \varnothing 15 x 100 thru axle
 \varnothing 15 x 110 thru axle
 \varnothing 20 x 110 thru axle

MATERIAL: AL6061-T6
WEIGHT: 33g/pcs (TAF015)
44g/pcs (TAF020)



NEW
CH-G23-MED2

For MTB 1X system drivetrain with bash guard.

MATERIAL: AL6061-T6/ Nylon
SPEC: ISCG 05
TEETH: 28-34T
COLOR: As Order



NEW
CH-BB-MU

BB mount tensioner.

MATERIAL: AL6061-T6
SPEC: Customization
COLOR: Black



NEW
CH-DLG9T

Chain guard with pulley style and bashguard.

MATERIAL: AL6061-T6
SPEC: ISCG 05
TEETH: 28-34T
COLOR: Black
High pivot



NEW
CH-DLR

Chain guard with roller style and bashguard.

MATERIAL: AL6061-T6/ NYLON
SPEC: ISCG 05
TEETH: 28-34T
COLOR: Black
High pivot



NEW

CH-CLD

MATERIAL: AL6061-T6
SPEC: Clamp Ø34.9,
Ø31.8, Ø28.6 mm
COLOR: Black



CH-BOSCX-MED2 CH-BOSCX-MED CH-BOSCX-MINI

For Bosch CX chain guide

MATERIAL: AL 6061T6
SPEC: Bosch CX
RANGE: 32T-38T
COLOR: As Order
OPTION: Spacer thickness



CH-BOSCX-MED2



CH-BOSCX-MED



CH-BOSCX-MINI

CH-R1-MINI

Design for mtb 1x system drivetrain.
Carbon long fibers with nylon Injection.
Without ADP-N. Easy to set up the top guide position.

MATERIAL: Carbon with nylon
SPEC: ISCG-05
RANGE: 30T - 36T
WEIGHT: 28g/set



CH-EX-FD

Low-profile, FD mount chain guard for 1X drivetrains. Alloy body, with a nylon guide that is easy to adjust and quiet on your chain.

MATERIAL: AL6066-T651 body / nylon cage
SPEC: FD mount system
RANGE: 32T - 58T
COLOR: Black
WEIGHT: 25g/set



CH-ES-LD

Low-profile, low direct mount chain guard for 1X drivetrains. Carbon injection body, with a nylon guide that is easy to adjust and quiet on your chain.

MATERIAL: Carbon body / nylon cage

SPEC: Low direct mount system

RANGE: 32T - 36T

COLOR: Black

WEIGHT: 17g/set



CH-CM1

Chain guard for 1 by 9, 10, 11 speed. With plastic upper guard.

MATERIAL: AL6061-T6

DIA: Ø34.9 With adapter to Ø31.8

COLOR: Black



ADP-KIOX-MBE32 / 35

For new generation KIOX bracket. Install KIOX display rear and left of the handlebar position.

MATERIAL: Nylon

SPEC: For Ø31.8mm / Ø35mm handlebar



ADP-KIOX-FBE-BAR32 / 35

For new generation KIOX bracket include extension bar for control unit.

MATERIAL: Nylon

SPEC: For Ø31.8mm / Ø35mm handlebar



ADP-KIOX-FBE32 / 35

For new generation KIOX bracket. Install KIOX display in front of the stem position.

MATERIAL: Nylon

SPEC: For Ø31.8mm / Ø35mm handlebar



ADP-KIOX-GRBAR-32 / 35

ADP-KIOX-GR-32 / 35

Clamp type computer mount for KIOX on-board computer.

MATERIAL: Nylon

SPEC: For $\varnothing 31.8\text{mm}$ / $\varnothing 35\text{mm}$ handlebar



$\varnothing 31.8$
or
 $\varnothing 35$



ADP-KIOX-GR-MB-32 / 35

Clamp type computer mount for KIOX on-board computer.

MATERIAL: Nylon

SPEC: For $\varnothing 31.8\text{mm}$ / $\varnothing 35\text{mm}$ handlebar



$\varnothing 31.8$
or
 $\varnothing 35$

ADP-KIOX-BWP

Clamp type computer mount for Kiox on-board computer.
For MTB bike.

MATERIAL: Nylon

SPEC: For $\varnothing 31.8\text{mm}$ handlebar clamp



$\varnothing 31.8$



ADP-KIOX-FP

Clamp type computer mount for Kiox on-board computer.
For Road bike / City bike.

MATERIAL: Nylon

SPEC: For $\varnothing 31.8\text{mm}$ handlebar clamp



$\varnothing 31.8$



ADP-KIOX-TOP

Top cap type computer mount.
For Kiox.

MATERIAL: Nylon

SPEC: For $\varnothing 28.6\text{mm}$ steerer tube



E-BIKE SYSTEM



TRSK-BSH-NW
TRSK-BSH-NWOF3
TRSK-BSH-NWOF6

For BOSCH® system Narrow Wide chainring.

MATERIAL: Cr-Mo steel (ASM 4140) heat treated



TRSK-BSH
TRSK-BSH-OF3
TRSK-BSH-OF6

For BOSCH® system chainring.

MATERIAL: Cr-Mo steel (ASM 4140) heat treated

NEW
CX-E-MOTO

E motor chainring with mud remove design on teeth shape.

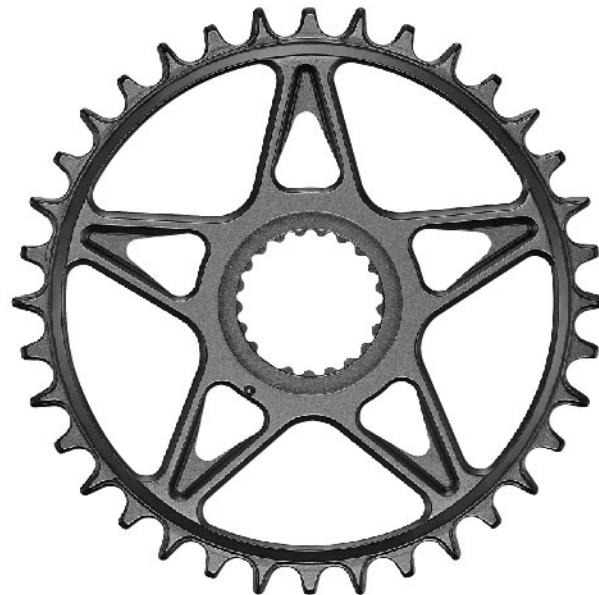
MATERIAL: AL7075-T651
P.C.D: Ø68.5 Hole
TEETH: As Order
COLOR: As Order
FIT: 420 chain



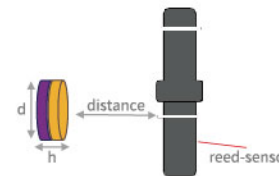
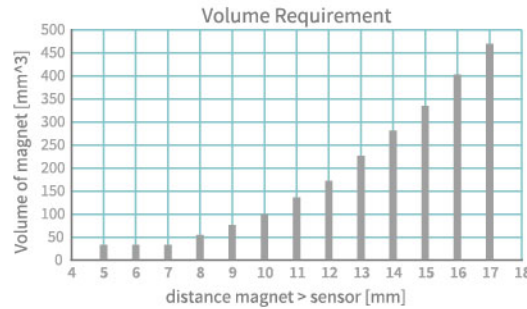
NEW
CX-XTR-DIR

Narrow Wide chainring for XTR / XT 12 speed crank.

MATERIAL: AL7075-T651
TEETH: 30T / 32T / 34T / 36T
SPEC: XTR/XT Direct mount



Property	Specification
Remanence	>1.3T
Polarization	Towards Sensor
Dimensions	Thickness > 0.5 x Diameter (h > 0.5d) Diameter > Thickness(d > h)
Volume*	$V = \pi \times h \times (d / 2)^2$ Depending

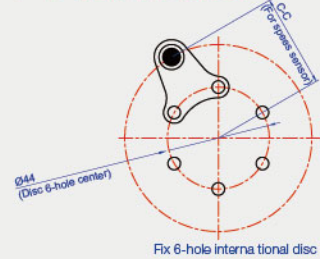


ADP-SHE8-P74S

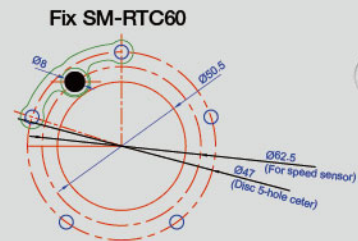
For E-bike speed sensor adapter, can fix SHIMANO® SM-RTC60.

MATERIAL: Stainless washer with N45 SH magnet
SPEC: C-C 40mm

▶ 6-Bolt Magnet



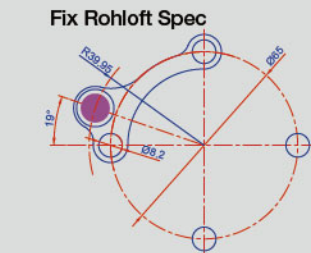
▶ 5-Bolt Magnet



ADP-SHE8-P74S

SHIMANO® SM-RTC60:
5-hole disc with 74mm pitch circle diameter.
SHIMANO® SG-C6061-8CD:
5-hole disc with 74mm pitch circle diameter.

▶ 4-Bolt Magnet



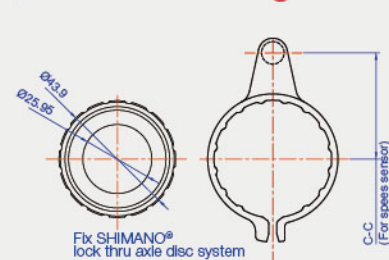
ADP-SHE8-RHMS

ADP-SHE8-RHMS

E-bike speed sensor adapter of rohloff speed hub E14.

MATERIAL: Stainless washer with N45 SH magnet
SPEC: C-C 40mm

▶ Center Lock Magnet



ADP-M-SHE8-32CS

ADP-M-SHE8-40CS

ADP-SHE8-1S

ADP-SHE8-2S

ADP-SHE8-3S

ADP-SHE8-W56S/ADP-SHE8-W60S

For E-bike speed sensor adapter.

MATERIAL: Stainless washer with N45 SH magnet
SPEC: ADP-SHE8-1S: C-C 32mm with 1mm magnet
ADP-SHE8-2S: C-C 32mm with 2mm magnet
ADP-SHE8-3S: C-C 40mm with 2mm magnet
ADP-SHE8-W56S: C-C 56mm with 2mm magnet
ADP-SHE8-W60S: C-C 60mm with 2mm magnet

ADP-SHE8-WS

Washer of SHIMANO® disc rotor.

MATERIAL: Stainless steel

THICKNESS: 0.5mm

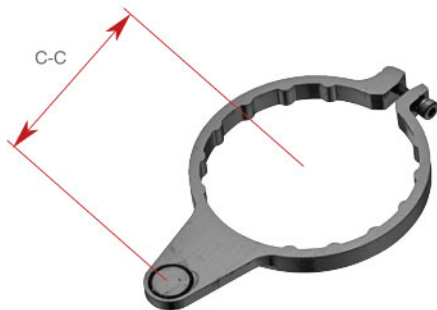


ADP-SHE8-HS

For E-bike speed sensor adapter.

MATERIAL: Stainless washer with N45 SH magnet

SPEC: C-C 32mm with 1mm magnet



ADP-M-SHE8-32CS ADP-M-SHE8-40CS

Locking adapter for E-bike speed sensor.

MATERIAL: AL6061 washer with N45 SH magnet

SPEC:

ADP-M-SHE8-1: C-C 32mm with 2mm magnet

ADP-M-SHE8-2: C-C 40mm with 2mm magnet

ADP-SH2

SHIMANO® center-lock disc hub adp.

Stainless steel washer with alloy nut



ADP-SH1

SHIMANO® center-lock disc hub adp.

Stainless steel washer with alloy nut



ADP-SH1220

SHIMANO® center-lock 12 / 20mm thru-axle disc hub adapter.
With alloy locking (M-SH3611)



ADP-DISC-SH-F

Center lock system / With alloy locking.

Front 15mm boost hub adapter for 100mm transform to 110mm hub.



ADP-DISC-SH-R

Center lock system / With alloy locking.

Rear 12mm boost hub adapter for 142mm transform to 148mm hub.



ADP-DISC-R6

Rear 12mm boost hub adapter for 142mm transform to 148mm hub.



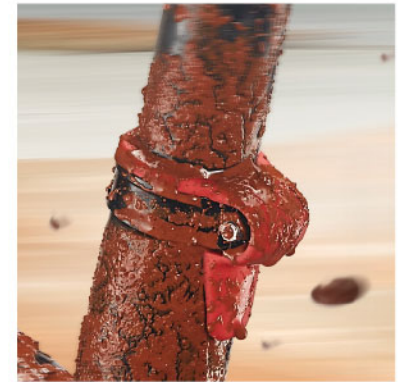
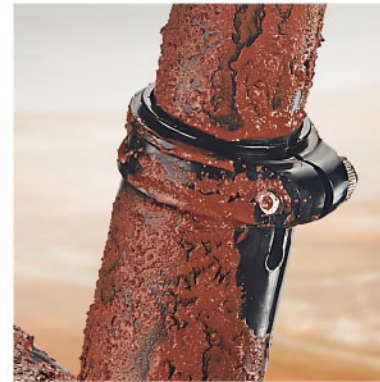
ADP-DISC-F



CL-CV OVER SIZE



P.A.T.ED WORLD WIDE



SPEC: Ø27.2 seatpost - Ø31.8 seattube / Ø31.6 seatpost - Ø34.9 seattube
 Ø27.2 seatpost - Ø34.9 seattube / Ø30.9 seatpost - Ø34.9 seattube
 Ø33.9 seatpost - Ø38.1 seattube / Ø34.9 seatpost - Ø38.6 seattube



TK-MG-CO

Top cap with full cover.

Material: AL-6061T6

COLOR: As order

WEIGHT: 9g

Custom logo design available



TK-001S TK-001S-38.1



MATERIAL: AL6061-T6

WEIGHT: 17.5g/pcs (W/O star nut)

SIZE: 1", 1-1/8" or 1-1/2"

OPTION: 1. Stainless screw
2. Star nut

TK-BEERA

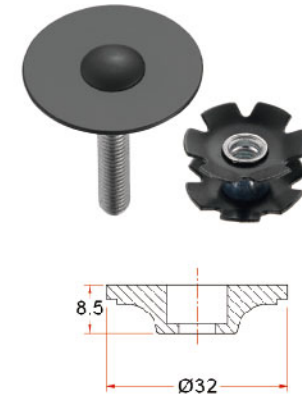
With TK-001S

MATERIAL: AL6061-T6 CNC finished
COLOR: As order
WEIGHT: 23g (W/O star nut)
Size: 1-1/8"



TK-TD01

MATERIAL: AL6061-T6
WEIGHT: 13g/pcs (W/O star nut)
SIZE: 1-1/8"
COLOR: Sand blast anodize with star nut
OPTION: AL7075-T73 screw
Stainless screw



TK-TD18

MATERIAL: AL6061-T6
WEIGHT: 13.3g/pcs (W/O star nut)
SIZE: 1-1/8"
COLOR: Sand blast anodize with star nut
OPTION: AL7075-T73 screw



TK-TD12-E

MATERIAL: AL6061-T6
WEIGHT: 16.5g/pcs (W/O star nut)
SIZE: 1-1/8"
COLOR: Sand blast anodize
Stainless screw
OPTION: AL7075-T73 screw



130

TK-TD-C

MATERIAL: Carbon
WEIGHT: 11.5g/pcs (W/O star nut)
SIZE: 1-1/8"
With star nut



TK-001D

MATERIAL: AL6061-T6
WEIGHT: 14.5g/pcs (W/O star nut)
SIZE: 1", 1-1/8"
OPTION: 1. Stainless screw
2. Star nut



LONG CARBON FIBER SPACER

Carbon Long fibers with nylon Injection material, can use and Create carbon high texture lightweight products.
For more details please contact our engineers.

MATERIAL: Long carbon fiber-reinforced PA12 resin
COLOR: UD Surface, UD with painting
Custom design available



UD Surface

AC-25.4-H / AC-28.6-H AC-31.8-H / AC-38.1-H

Carbon spacer.

Spec: AC-25.4-H (ID $\varnothing 25.6 \pm 0.2$ x OD $\varnothing 31.5$)
AC-28.6-H (ID $\varnothing 28.8 \pm 0.2$ x OD $\varnothing 34$)
AC-31.8-H (ID $\varnothing 32.0 \pm 0.2$ x OD $\varnothing 38.8$)
AC-38.1-H (ID $\varnothing 38.3 \pm 0.2$ x OD $\varnothing 45.2$)

H: As Order
Color: 3K, UD



ACE-28.6-H ACE-31.8-H

Carbon spacer.

P.A.T ED
Spec: ACE-28.6-H (ID $\varnothing 28.8$ x OD $\varnothing 34$)
ACE-31.8-H (ID $\varnothing 32.0$ x OD $\varnothing 38.8$)

H: As Order
Color: 3K, UD



AR-25.4-H / AR-28.6-H AR-31.8-H / AR-38.1-H

Alloy spacer.

Spec: AR-25.4-H (ID $\varnothing 25.6 \pm 0.2$ x OD $\varnothing 32$)
AR-28.6-H (ID $\varnothing 28.8 \pm 0.2$ x OD $\varnothing 32.5$,
 $\varnothing 33$, $\varnothing 34$, $\varnothing 35$, $\varnothing 36$)
AR-31.8-H (ID $\varnothing 32.0 \pm 0.2$ x OD $\varnothing 38.8$)
AR-38.1-H (ID $\varnothing 38.3 \pm 0.2$ x OD $\varnothing 44$)

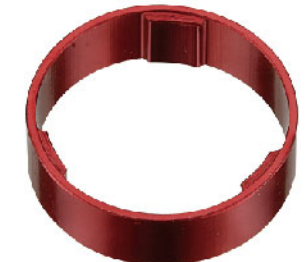
H: As Order
Color: As Order



AE-28.6-H

Alloy spacer.

P.A.T ED
Spec: AE-28.6-H (ID $\varnothing 28.8 \pm 0.2$ x OD $\varnothing 34$)
H: As Order
Color: As Order
OPTION: $\varnothing 35$ or $\varnothing 36$



NEW
AR-28.6-H

Alloy spacer for Ø28.6 fork.
Carbon fiber steering tube please notify.

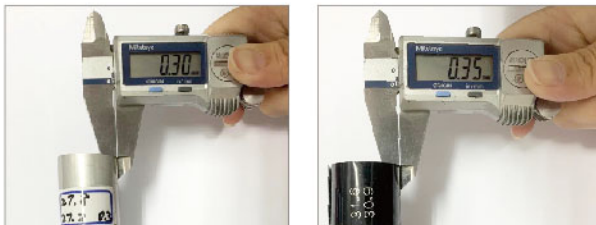
MATERIAL: AL6061-T6
SPEC: ID 28.8-0.2 x OD Ø34mm / ID 28.8-0.2 x OD Ø36mm
H: OD Ø34/ 50, 100, 110, 120, 130, 140, 150, 160, 180, 200 mm
OD Ø36/ 50, 100, 110, 120, 130, 140, 150, 175, 200 mm
COLOR: Sand blast black, silver
Black, Silver
As Order



SHIM-1012

MATERIAL: AL6061-T6
SPEC: OD Ø30.0 x ID Ø27.2 x (H)100mm
OD Ø30.2 x ID Ø27.2 x (H)100mm
OD Ø30.6 x ID Ø27.2 x (H)100mm
OD Ø30.9 x ID Ø27.2 x (H)100mm
OD Ø31.6 x ID Ø27.2 x (H)100mm
OD Ø33.9 x ID Ø30.9 x (H)110mm
OD Ø34.9 x ID Ø30.9 x (H)110mm
OD Ø33.9 x ID Ø31.6 x (H)110mm
OD Ø34.9 x ID Ø31.6 x (H)110mm
OD Ø40.0 x ID Ø33.9 x (H)120mm
OD Ø40.0 x ID Ø34.9 x (H)120mm

COLOR: As Order
Customized service design available.



SPA-35A

MATERIAL: 3D forged AL6066-T6
SPEC: Ø34.9
LENGTH: 450mm/ 600mm/ 700mm
OFFSET: 20mm
WEIGHT: 626g (450mm)



CL-BCV-45

QR-type for over size seat clamp with anti-dust and waterproof cover.
Custom Size available.

MATERIAL: Clamp/ AL6061-T6
Cover/ NBR

Seat tube range Ø34.9-Ø40

Cover Spec: Ø27.2 seat post

Ø30.9 seat post

Ø31.6 seat post

Seat tube range Ø41-Ø46

Cover Spec: Ø31.6 seat post

Ø33.9 seat post

Ø34.9 seat post



ADP-STEM

Steering tube extend.
For Ø28.6mm fork.

MATERIAL: AL6061-T6

LENGTH: 50mm, 90mm, 120mm

With top cap & long screw x2pcs
for custom to assemble

Adjust the height (mm)

	MIN	MAX
50	47.5	65.5
90	47.5	105.5
120	47.5	135.5



NEW

SSP-SR98-ROLLER KIT

MATERIAL: Carbon Cage/ AL7075-T65

SPEC: 12T+16T

FOR: SHIMANO" R9250 / R8150

COLOR: UD carbon

OPTION: Ceramics ball bearing.



SSP-AX-ROLLER KIT

MATERIAL: AL 6061T6 CAGE/AL7075 T651 PULLEY

SPEC: SRAM AXP derailleur system

COLOR: As Order

OPTION: Ceramics ball bearing

WEIGHT: 67g



NEW
ADP-3RL-2X32

Double clamp for Ø31.8 extension bar,
create extra space for bikepacking gear.

Material: 6061-T6
Spec: Clamp Ø31.8
TUBE Ø31.8 x 200L



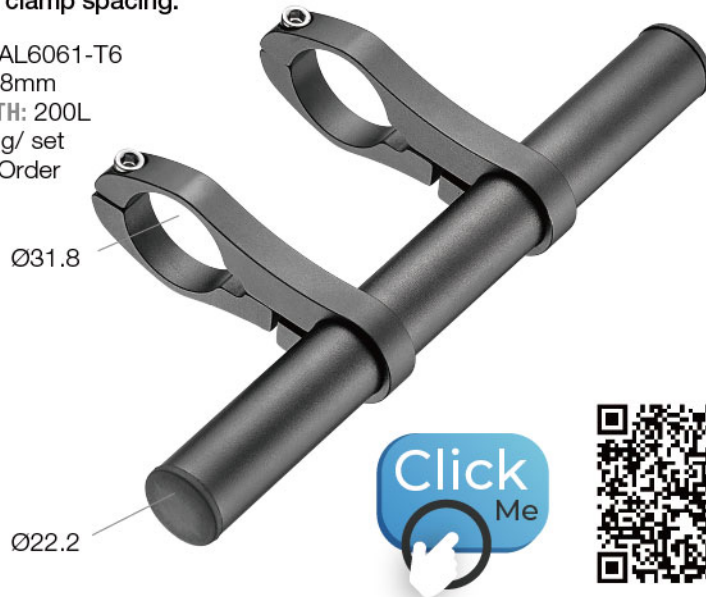
Removeable end cap.
Tube inside for extrastorage space.



ADP-3RL

Double alloy clamp with length 200m/m tube.
Adjustable clamp spacing.

MATERIAL: AL6061-T6
SPEC: Ø31.8mm
TUBE LENGTH: 200L
WEIGHT: 43g/ set
COLOR: As Order



ADP-ORG26-35/ ADP-ORG26-35-A

Create extra space for handlebar.
Double clamp With Carbon tube Ø26mm.

MATERIAL: AL6061 clamp
ADP-ORG26-35: 3K CARBON tube
ADP-ORG26-35-A: AL6061 tube
SPEC: Ø35mm
W: 46mm/ 59mm



AVAILABLE IN DIFFERENT CYCLING COMPUTER AND CAMERA / LIGHT MOUNT

Interchangeable trays:



GM1
(GARMIN Edge®)



Mio2
(MIO® Cyclo™)



BTN3
(Bryton Rider™)



GAT5
(GIANT NEOSTRACK®)



WHO6
(WAHOO ELEMNT®)



GPO7
(GoPro®)

NEW GM-GRA

Computer mount for integrated bar stem.
Main arm angle adjustable.

MATERIAL: AL 6061-T6 / NYLON



GMX-MY23

Computer mount for integrated bar stem.
Main arm angle adjustable.

MATERIAL: AL6061

WEIGHT: 46g/ set

(Not available in Japan)



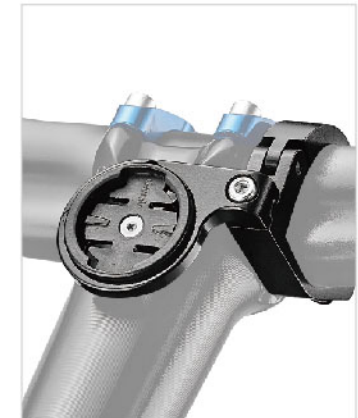
AC-MTB35

Clamping type for MTB and cyclocross cycling computer mount.
Allow riders place computer above the stem.

MATERIAL: AL6061

with SHIM Ø31.8mm

WEIGHT: 39g/ set



WB-R1-20C

The unique geometric-design water bottle cage, made of high-strength carbon-compound fiber, gives rooms to quick-link storage, and secures the water bottle firmly while in motion. This side-pull water bottle cage allows bikers to retrieve water bottles sideward or upward.

MATERIAL: Carbon composite
WEIGHT: 32g/pcs



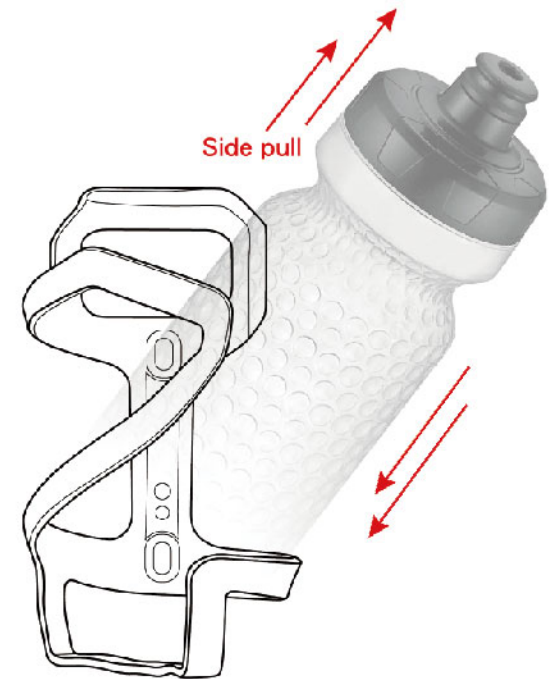
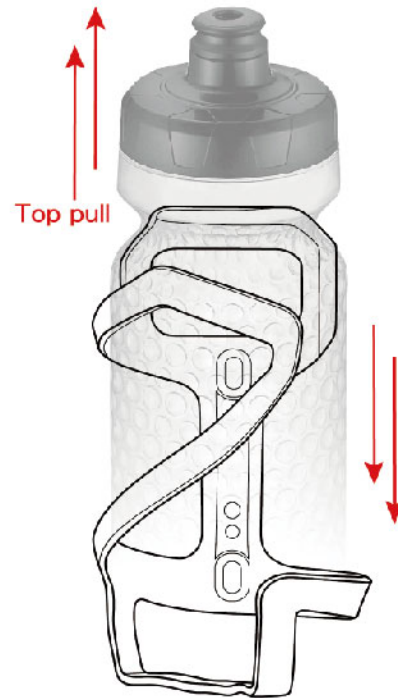
Extra space for quick-link.



Easy to access bottle sideward or upward.



Eccentricity Distance
15mm



NEW
CL-50WB

Water bottle cage adapter for Ø31.8 clamp.
Rotate 90 degrees available.

MATERIAL: AL6061-T6
SPEC: Ø31.8 mm



For handlebar.



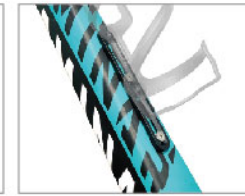
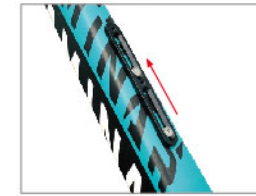
For seat post.



NEW
WB-EXT-M

Bottle cage adapter.
Used to change the position of the water bottle cage.
Adjustable range 46mm.

MATERIAL: AL6061-T6



NEW
WB-STP52

Excellent solution for extra parts storage.

MATERIAL: Bracket/ AL6061-T6
Strap/ Plastic+ Velcro
SPEC: Strap/ 25 x 250mm



NEW
WB-STP34

Extra storage spacer in stem area.

MATERIAL: Spacer/ AL6061-T6
Strap/ Plastic+ Velcro
SPEC: Spacer/ H 4mm, ID Ø28.6mm
Strap/ 25 x 250mm





NEW
WB-G701 / WB-G702-E

WB-G701: Pressure valve cap
WB-G702-E: Standard valve cap

MATERIAL: P.P

VOLUME: 750cc

WEIGHT: 60g/pcs (WB-G701)

COLOR: Black, Red, White, Transparent Black, Transparent, White, Matte/ Grass Green, Transparent Black, Prussian Blue, Rose Red, White, Black, Purple



WB-G701

WB-G301 / WB-G302-E

WB-G301: Pressure valve cap
WB-G302-E: Standard valve cap

MATERIAL: P.P

VOLUME: 600cc

WEIGHT: 54g/pcs (WB-G302-E)

COLOR: Black, Red, Blue, Apple Green, Orange, Purple, Pink, White, Transparent Black, Transparent, Yellow, Light Green, Sky Blue, Gold, Gray, Grass, Green, Prussian Blue, Lavender, Violet, Rose, Azure, Matte/ Grass Green, Transparent Black, Prussian Blue, Rose Red, White, Black, Purple

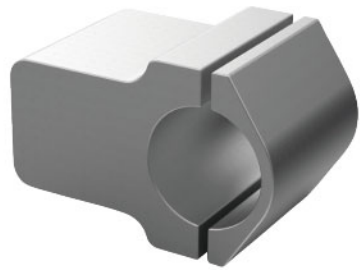


WB-G301



WB-G302-E

We offer stem extrusion material data Your stem design we process it (CNC) as you design.



Your Design

WE MAKE STEM (CNC)



► Case Example

SM-1396_Project

MATERIAL: 6061-T6
LENGTH: C-C : 35m/m
SPEC: Steerer tube Ø28.6
Bar Bore Ø31.8



► Case Example

SM-1404_Project

MATERIAL: 6061-T6
LENGTH: C-C : 50m/m
SPEC: Steerer tube Ø28.6
Bar Bore Ø31.8





DESIGN FOR DI2 CABLE HOLE

The inner cable of Di2 is getting popular, so Mr Control make change for all types of road bike handlebar, we drill the hole for Di2 inner cable to make the handlebar look more clean.

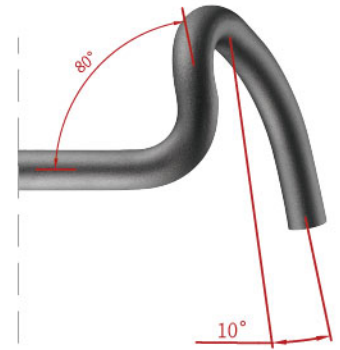


HB-RBA-0209

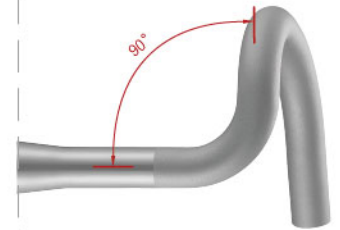
MATERIAL: AL6061-T6
SPEC: Ø31.8 x W360mm / 380mm / 400mm / 420mm / 440mm (C-C)
INWARD: 10degrees
FLARE: 10degrees
DROP: 115mm
REACH: 75mm
BAR TYPE: Compact bend
WEIGHT: 297g/pcs±10g

Innovation version

HB-RBA-0209



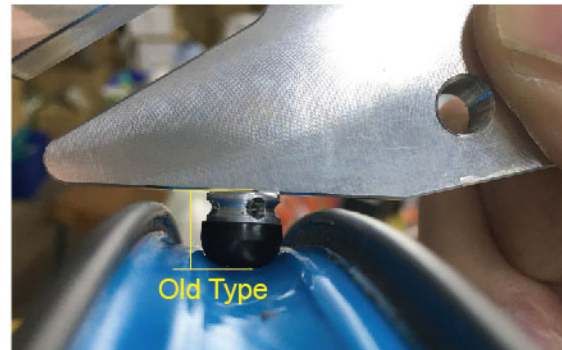
Current type



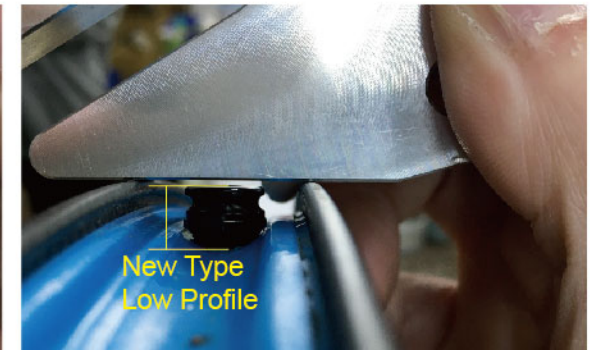
NZ-TUSH-F

The multi-vent valve allows users to pump up tyres quickly and also works with most the foam-inserted tubeless tyres.

MATERIAL: AL6061-T6 with NBR taper cone spacer
SPEC: Presta valve
LENGTH: 47, 52, 62, 72, 87, 107mm



Old Type



New Type
Low Profile



NEW

TL-BB-EXT56
TL-BB-EXT50
TL-BB-EXT48
TL-BB-EXT43

MATERIAL: AL7075
COLOR: EXT56 Silver/ EXT50 Gold/ EXT48 Green/ EXT43 Gray
WEIGHT: EXT56 109g/ EXT50 82g/ EXT48 91g/ EXT43 66g



TL-BB-EXT56



TL-BB-EXT48



TL-BB-EXT50



TL-BB-EXT43

NEW

TL-BB-AXLE 2224
TL-BB-AXLE 2829
TL-BB-AXLE 2830

MATERIAL: AL6061-T6
COLOR: AXLE2224 Blue
AXLE2224 Black
AXLE2224 Red
WEIGHT: AXLE2224 59g
AXLE2224 120g
AXLE2224 126g



TL-BB-AXLE 2224



TL-BB-AXLE 2829



TL-BB-AXLE 2830

NEW

TL-BB-SET

The **BOTTOM BRACKET TOOL** is made by high precision CNC machine to provide better contact area and stability of operation. It can suitable for different specifications of BB and prevent tool slippage during use.

MATERIAL: AL7075/ AL6061-T6



TL-BB-EXT56



TL-BB-EXT48



TL-BB-AXLE 2224



TL-BB-AXLE 2829



TL-BB-AXLE 2830



TL-BB-EXT50



TL-BB-EXT43

WB-ATG-02

Air Tag holder that mount on the bike frame water bottle attachment point, and zip tip under the bike saddle rail.

MATERIAL: Nylon66

COLOR: Black

WEIGHT: 23g/pcs (With bolt)

Air Tag not included



TK-ATG01

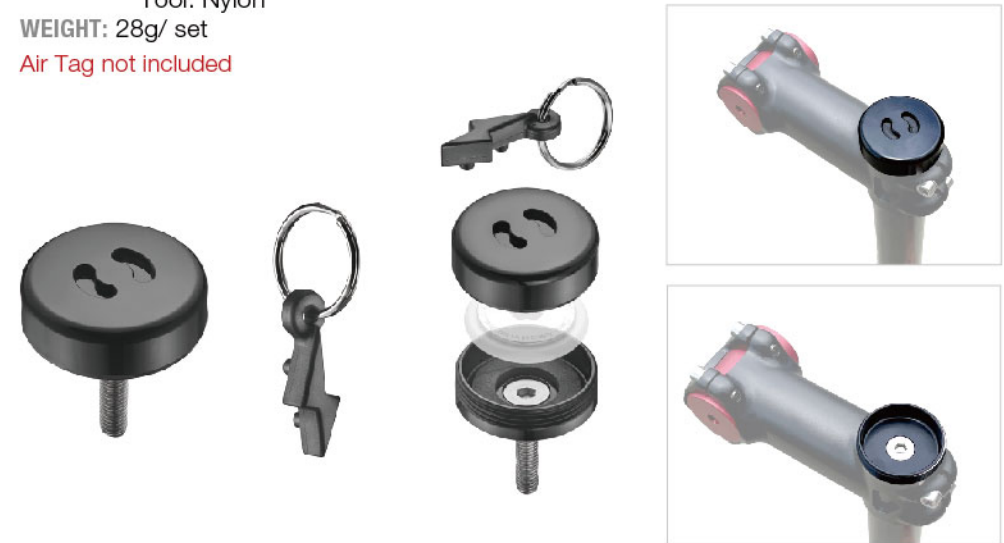
Top cap with Air Tag holder, special locking tool include.

MATERIAL: Top cap: AL6061

Tool: Nylon

WEIGHT: 28g/ set

Air Tag not included



PU-8703-T22

The function of protector is to provide the best Friction resistance and protection for the frame, it keeps your frame new and clean.

MATERIAL: PVC

Spec: Top tube protection x1

Down tube protection x1

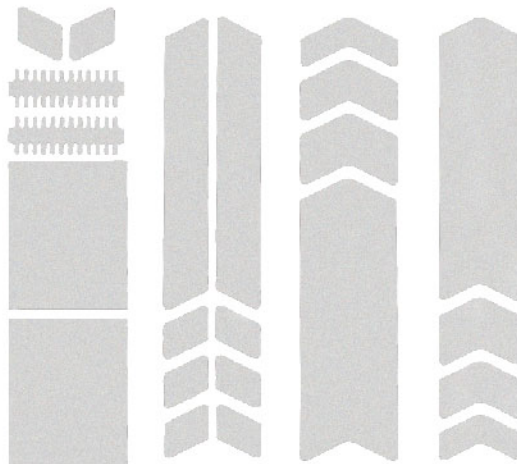
Chainstay protection x2

Frame or other protection x6

H: 0.4mm

COLOR: 50% transparent

WEIGHT: 31g



NEW

PU-9000-T22

The function of protector is to provide the best Friction resistance and protection for the frame, it keeps your frame new and clean.

MATERIAL: PVC

Spec: Top tube protection x1

Down tube protection x1

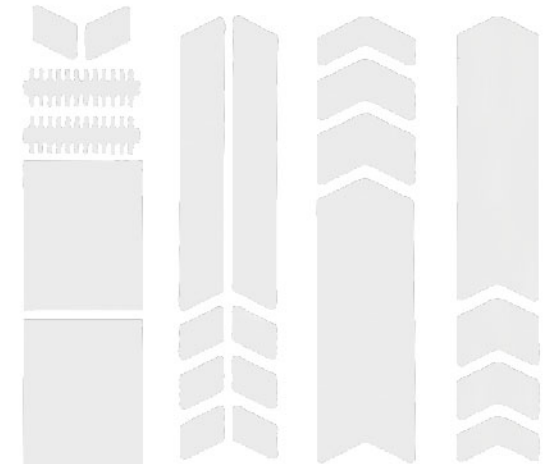
Chainstay protection x2

Frame or other protection x6

H: 0.25mm

COLOR: Transparent

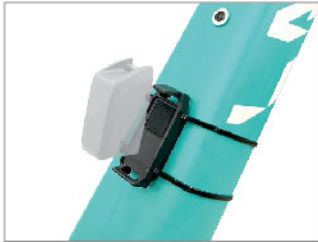
WEIGHT: 29g



NEW
ADP-BT-S

Holder for SRAM® AXS/ ETAP battery.

MATERIAL: Nylon66
COLOR: Black, red
With cable tie
Battery not included



NEW
RS-MINI BAR-02

New design can combination with lock-on grip.

MATERIAL: Nylon
WEIGHT: 30.4g/set



RS-MINI BAR

Create an additional hand position on the handlebar.
Minimizes hand numbness, carpal and ulnar issues.

MATERIAL: Nylon
SPEC: ID Ø22.2mm
WEIGHT: 17.8g/set



ADP-FA-P16

For flat mount fork adapter to post mount caliper.

MATERIAL: AL 6061-T6
Spec: For 160m/m rotor
WEIGHT: 42g



ADP-RFA-P14

For flat mount frame adapter to post mount caliper.

MATERIAL: AL 6061-T6
Spec: For 140m/m rotor
WEIGHT: 16g



ADP-RFA-P16

For flat mount frame adapter to post mount caliper.

MATERIAL: AL 6061-T6
Spec: For 160m/m rotor
WEIGHT: 23g



ADP-RFA-P18

For flat mount frame adapter to post mount caliper.

MATERIAL: AL 6061-T6
Spec: For 180m/m rotor
WEIGHT: 26g

NEW

SDM-HANGER-001

Fit 2023 GIANT® TCR & PROPEL & DEFY.

MATERIAL: AL7075-T651

Customer available



CL-ISPEC-2

SHIMANO® SL-RS700 I-SPEC-2 flat bar shift lever to clamp type.

MATERIAL: AL6061-T6

SPEC: I-SPEC-2

COLOR: Sand blast black



EV-CLAMP-21

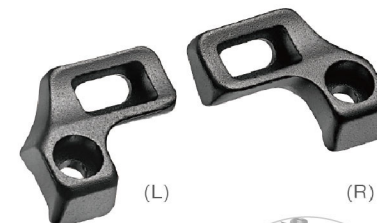
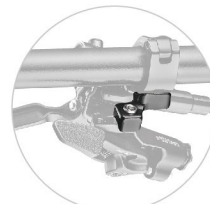
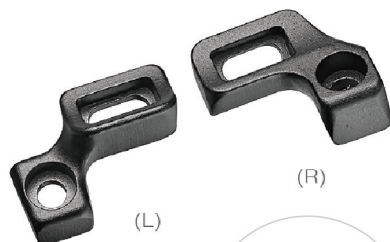
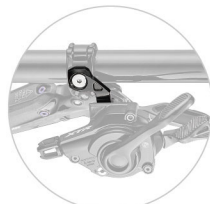
Shifter (shift lever) I-SPEC-EV mount.

MATERIAL: AL6061-T6

Compatibility handlebar: 22.2mm

Compatibility shift lever: SHIMANO®

WEIGHT: 25g



ADP-EVMX22

Adapter for SRAM disc brake lever to SHIMANO shift lever with screw and nut.

MATERIAL: Forged AL 6061T6

SPEC: SRAM MMX system to SHIMANO® I-SPEC-EV system

WEIGHT: 16g/ set

COLOR: Sand blast black

ADP-ISPEC-EV

SHIMANO® disc brake lever can fix SRAM® shift lever. With special screw and nut.

MATERIAL: AL6061 -T6

SPEC: I-SPEC-EV

ADP-ISPEC-EV-21

SHIMANO® disc brake lever can fix SRAM® shift lever. With special screw and nut. Left & right same angle.

MATERIAL: AL6061 -T6

SPEC: I-SPEC-EV

WEIGHT: 15g/ set



▶ TL-101-1

6 Functions features combo pliers content

Unlock & pre-lock



1_2 / Chain Pliers

5 / Master Links Storage



For 10.11.12 speed master links and chains



3 / Bike Chain Hook

Magnet

6 / Valve Core Tool



Storage Vault



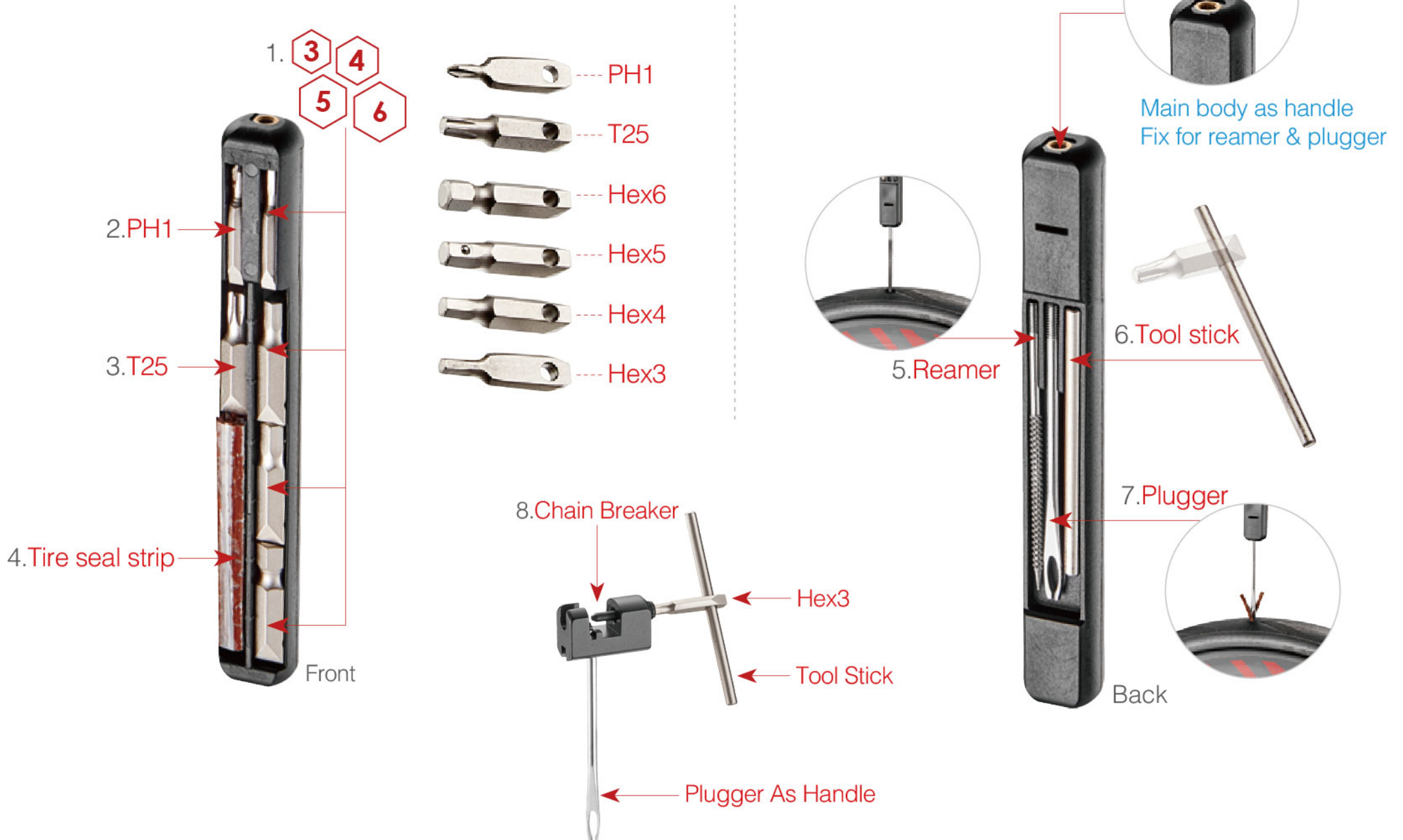
4 / Tire Levers

P.A.T.E.D

Tire lever not recommended for use on carbon rims

▶ TL-102-1

8 Functions features tubeless repair kit



3 4 5 6
6功能板手組 6 PCS BITS

- 把手
Tool stick
- 十字
PH1
- 梅花25
T25
- 六角3
Hex3
- 六角4
Hex4
- 六角5
Hex5
- 六角6
Hex6

鏈條配件 LINKS & ACCESSORIES

- 快扣
Chain quick links
可自行到商店購買
(You may purchase it in the shop)
- 快扣拆卸
Chain Pliers
- 快扣存放槽
Master Links Storage
- 鏈條鈎
Bike Chain Hook
- 打鏈器
Chain Breaker

補胎和配件 PATCHING TIRE & ACCESSORIES

- Co2鋼瓶
Threaded CO2 cartridges
可自行到商店購買
(You may purchase it in the shop)
 - Co2氣瓶嘴(選配)
Co2 Inflator (Option)
 - (短)打氣筒(選配)
(S) Bicycle Pump (Option)
 - (長)打氣筒(選配)
(L) Bicycle Pump (Option)
 - (長)打氣筒轉接頭(選配)
(L) Bicycle Pump Adapter (Option)
- FOURERS 選配配件**
(FOURERS Option Accessories)

輪框配件 RIM SET ACCESSORIES

- 補胎片專用膠
Glue
可自行到商店購買
(You may purchase it in the shop)
- 磨片
Grinder
- 補胎片
Patch
- 自黏式補胎片
Self-adhesive patch
- 銼刀
Reamer
- 補胎條
Tire seal strip
- 補胎條壓入器
Plugger As Handle

- 輻條扳手
Spoke wrench
- 氣芯拆卸孔
Valve Core Tool
- 挖胎棒
Tire Lever
- 銅頭
Nipple
- 幅條
Spoke
可自行到商店購買
(You may purchase it in the shop)

22
Functions

建議在您旅行前從商店購買
SUGGEST BUY FROM SHOP BEFORE YOUR TRAVEL



幅條
Spoke



銅頭
Nipple



快扣
Chain quick links



補胎片
專用膠
Glue



Co2鋼瓶
Threaded
CO2 cartridges



TL-105

Stainless steel plate nylon container.

CONTENT: Spoke wrench x 1pcs
Patch x 12pcs
Tire seal strip 5 strip x 5pack
Self-adhesive patch x 12pcs
Grinder x 1pcs

TL-105-E

Stainless steel plate nylon container only.



TL-105-E





F-STRAP

Quick and easy to carry repair kits when long distance riding.

VELCRO LENGTH: 58cm

Tools not included



F-STRAP-BAG

Quick and easy to carry repair kits when long distance riding, include mounting bag to help for sorting kit.

VELCRO LENGTH: 58cm

Tools not included



NEW

PD-1298

Safety & anti-slip & comfortable
New concept put together for the innovation Pedal.
Soft compound to avoid to hitting leg.

MATERIAL: Platform AL6061-T6
Axle cr-mo

Platform size: 98x98x12

Pin: 14 per side

Patent Pending
International & Taiwan & China



NEW

PD-1289

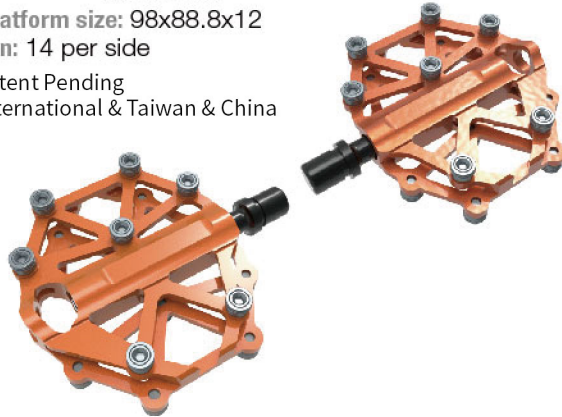
Safety & anti-slip & comfortable
New concept put together for the innovation Pedal.
Soft compound to avoid to hitting leg.

MATERIAL: Platform AL6061-T6
Axle cr-mo

Platform size: 98x88.8x12

Pin: 14 per side

Patent Pending
International & Taiwan & China



NEW

PD-1885

Safety & anti-slip & comfortable
New concept put together for the innovation Pedal.
Soft compound to avoid to hitting leg.

MATERIAL: Platform AL6061-T6
Axle cr-mo

Platform size: 110x84.6x7

Pin: 12 per side

Patent Pending
International & Taiwan & China



NEW

PD-1898

Safety & anti-slip & comfortable
New concept put together for the innovation Pedal.
Soft compound to avoid to hitting leg.

MATERIAL: Platform AL6061-T6
Axle cr-mo

Platform size: 110x98x7

Pin: 6 per side

Patent Pending
International & Taiwan & China



NEW

PD-18101a

Safety & anti-slip & comfortable
New concept put together for the innovation Pedal.
Soft compound to avoid to hitting leg.

MATERIAL: Platform AL6061-T6
Axle cr-mo

Platform size: 95x101x7

Pin: 6 per side

Patent Pending
International & Taiwan & China



NEW

PD-18101b

Safety & anti-slip & comfortable
New concept put together for the innovation Pedal.
Soft compound to avoid to hitting leg.

MATERIAL: Platform AL6061-T6
Axle cr-mo

Platform size: :99x101x7

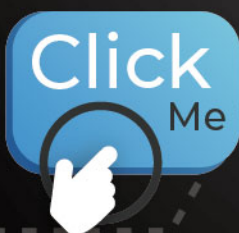
Pin: 8 per side

Patent Pending
International & Taiwan & China



FITTING

Series

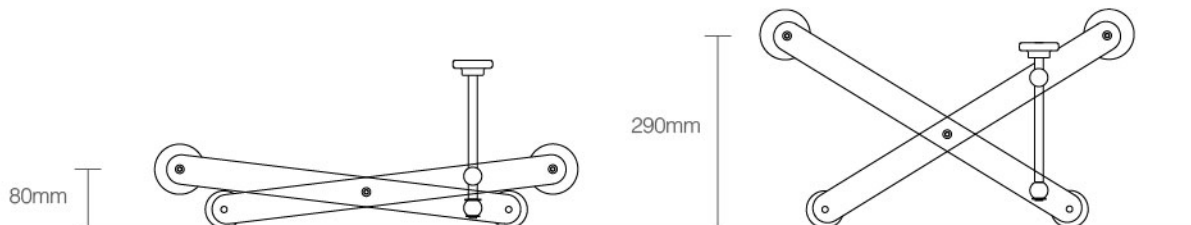
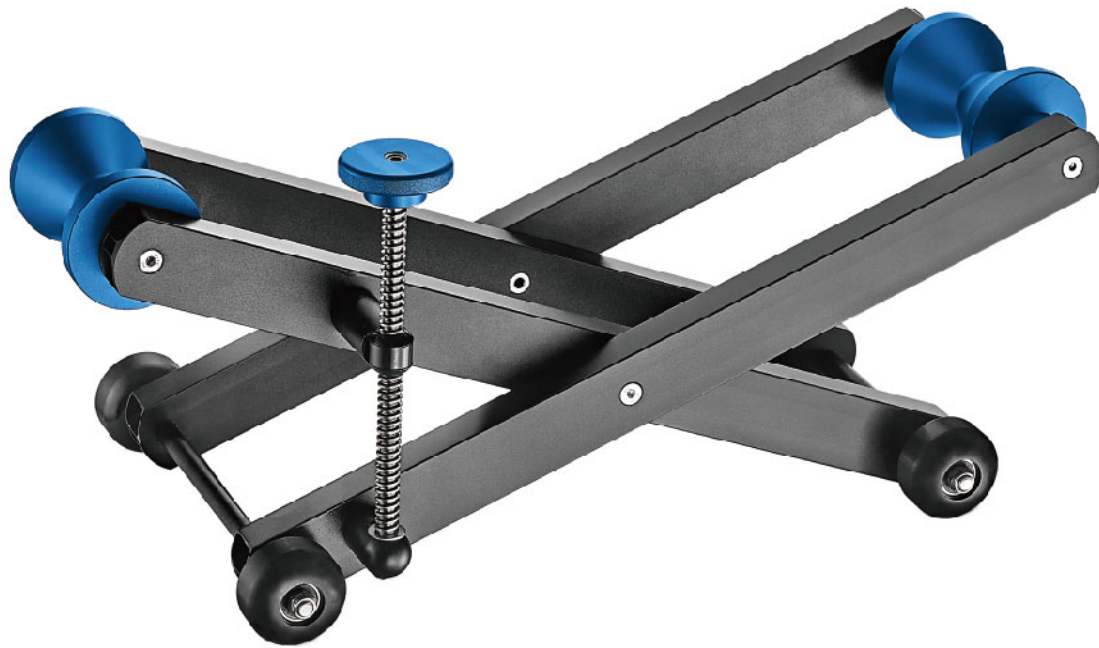


NEW

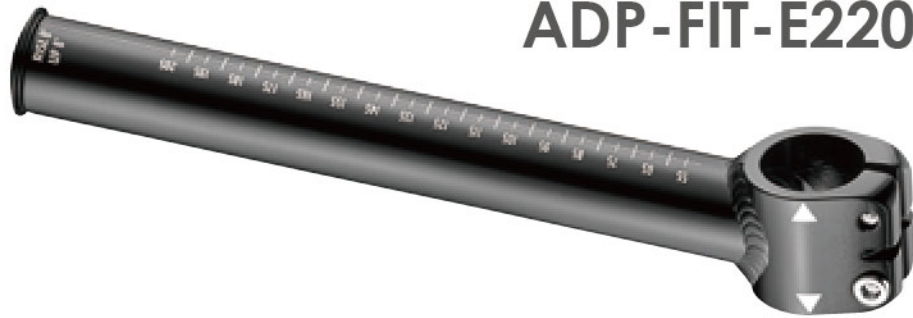
ADP-FIT-WR

Quick and easy to change position for trainer or fitting.
Angle adjustment from 0 to 12 degrees.
Four wheels allow it to adjust itself.

HEIGHT RANGE: 80 - 290 mm



ADP-FIT-E220



Adjustable welding stem.

MATERIAL: AL6066

ANGLE: $\pm 8^\circ$

CLAMP HEIGHT: 50mm

C-C: 205mm

STEM TUBE SIZE: $\varnothing 28.6\text{m}$

Length adjustable 55mm~205mm

Only for fitting setting not for outdoor riding.



ADP-FIT-RHB



Allow you to find the most appropriate handlebar width swiftly and painlessly.
Ease your physical fatigue for long distance riding.

MATERIAL: AL6061
SPEC: 320~440mm
DROP: ± 125 mm
REACH: ± 70 mm

Only for fitting setting not for outdoor riding.

Find your perfect handlebar width swiftly.





ADP-FIT-SA

Use the STEM ADJUSTER to provide fitting service for the biker on his or her own bike to earn the right stem length (50mm~150mm) and angle (± 30 degrees) .

FORK STACK HIGH: $\varnothing 40\text{mm}$, $\varnothing 31.8\text{mm}$ with shim $\varnothing 28.6\text{mm}$

HANDLEBAR CLAMP: $\varnothing 31.8\text{mm}$

LENGTH: 50 - 150mm

ANGLE: $\pm 30^\circ$

OPTION: $\varnothing 35\text{mm}$ Clamp



ADP-FIT-XYA



Stem dimension inspection platform.

MATERIAL: AL6061-T6

SPEC:

HANDLEBAR STEM: $\text{Ø}31.8 \times \text{Ø}34.9 \times (\text{H})50\text{mm} \times 1\text{pc}$

SPACER: $\text{IDØ}28.6 \times \text{ODØ}34.2 \times (\text{H})3\text{mm} \times 2\text{pcs}$

$\text{IDØ}28.6 \times \text{ODØ}34.2 \times (\text{H})5\text{mm} \times 2\text{pcs}$

$\text{IDØ}28.6 \times \text{ODØ}34.2 \times (\text{H})10\text{mm} \times 1\text{pc}$

$\text{IDØ}31.8 \times \text{ODØ}38.8 \times (\text{H})2.5\text{mm} \times 2\text{pcs}$

$\text{IDØ}31.8 \times \text{ODØ}38.8 \times (\text{H})5\text{mm} \times 2\text{pcs}$

$\text{IDØ}31.8 \times \text{ODØ}38.8 \times (\text{H})10\text{mm} \times 1\text{pc}$

SHIM-CC-AL: $\text{IDØ}28.6 \times \text{ODØ}31.8 \times (\text{H})38\text{mm} \times 1\text{pc}$

$\text{IDØ}31.8 \times \text{ODØ}34.9 \times (\text{H})58\text{mm} \times 1\text{pc}$

WEIGHT: 2.515kg/set



ADP-FIT-CZ

Precision CNC machines fitting bike sizing cranks.

CRANK LENGTH: 145,150,155,160,165,167.5,170,
172.5,175,177.5,180mm

AXLE: 24mm / 30mm

MATERIAL: Crank: AL6061-T6
Axle: AL7075-T651

CHAINRING: Single 46T



CK-GRA



145 147.5 150 152.5 155 157.5 160 162.5 165 167.5 170 172.5 175mm